

THE MAJOR ARTSTIC EVENTS 1945-2015

ERASMUS+ 70 YEARS OF EUROPEAN HISTORY 1945-2015



POP ART

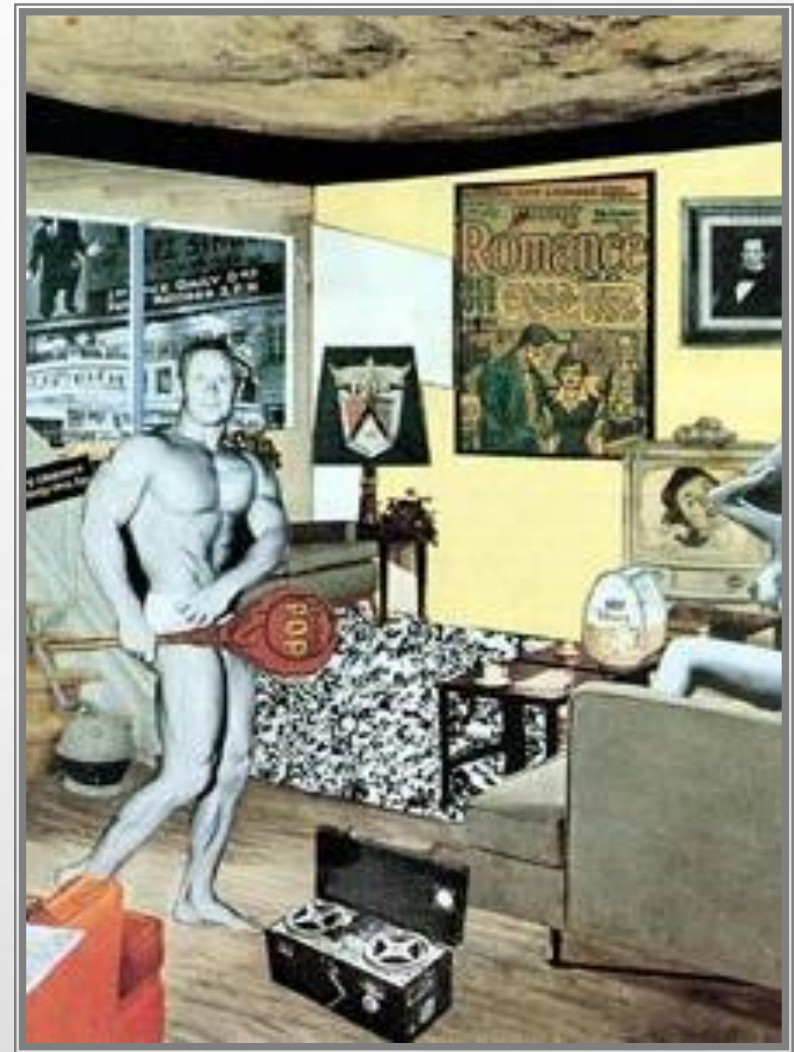
WHAT IS POP ART?

POP ART IS AN ART MOVEMENT THAT EMERGED IN THE MID-1950S IN BRITAIN. AMONG THE EARLY ARTISTS THAT SHAPED THE POP ART MOVEMENT WERE EDUARDO PAOLOZZI AND RICHARD HAMILTON IN BRITAIN. POP ART PRESENTED A CHALLENGE TO TRADITIONS OF FINE ART BY INCLUDING IMAGERY FROM POPULAR CULTURE SUCH AS ADVERTISING AND NEWS. IN POP ART, MATERIAL IS SOMETIMES VISUALLY REMOVED FROM ITS KNOWN CONTEXT, ISOLATED, AND/OR COMBINED WITH UNRELATED MATERIAL. THE CONCEPT OF "POP ART" REFERS NOT AS MUCH TO THE ART ITSELF AS TO THE ATTITUDES BEHIND THE ART.



POP ART EMPLOYS ASPECTS OF MASS CULTURE, SUCH AS ADVERTISING, COMIC BOOKS AND MUNDANE CULTURAL OBJECTS. ONE OF ITS AIMS IS TO USE IMAGES OF POPULAR (AS OPPOSED TO ELITIST) CULTURE IN ART, EMPHASIZING THE BANAL OR KITSCHY ELEMENTS OF ANY CULTURE, MOST OFTEN THROUGH THE USE OF IRONY.

RICHARD HAMILTON'S COLLAGE JUST WHAT IS IT THAT MAKES TODAY'S HOMES SO DIFFERENT, SO APPEALING? (1956) IS ONE OF THE EARLIEST WORKS TO BE CONSIDERED "POP ART".



PHOTOREALISM

WHAT IS PHOTOREALISM?

PHOTOREALISM IS A GENRE OF ART STARTED IN THE 60S THAT ENCOMPASSES PAINTING, DRAWING AND OTHER GRAPHIC MEDIA, IN WHICH AN ARTIST STUDIES A PHOTOGRAPH AND THEN ATTEMPTS TO REPRODUCE THE IMAGE AS REALISTICALLY AS POSSIBLE IN ANOTHER MEDIUM.

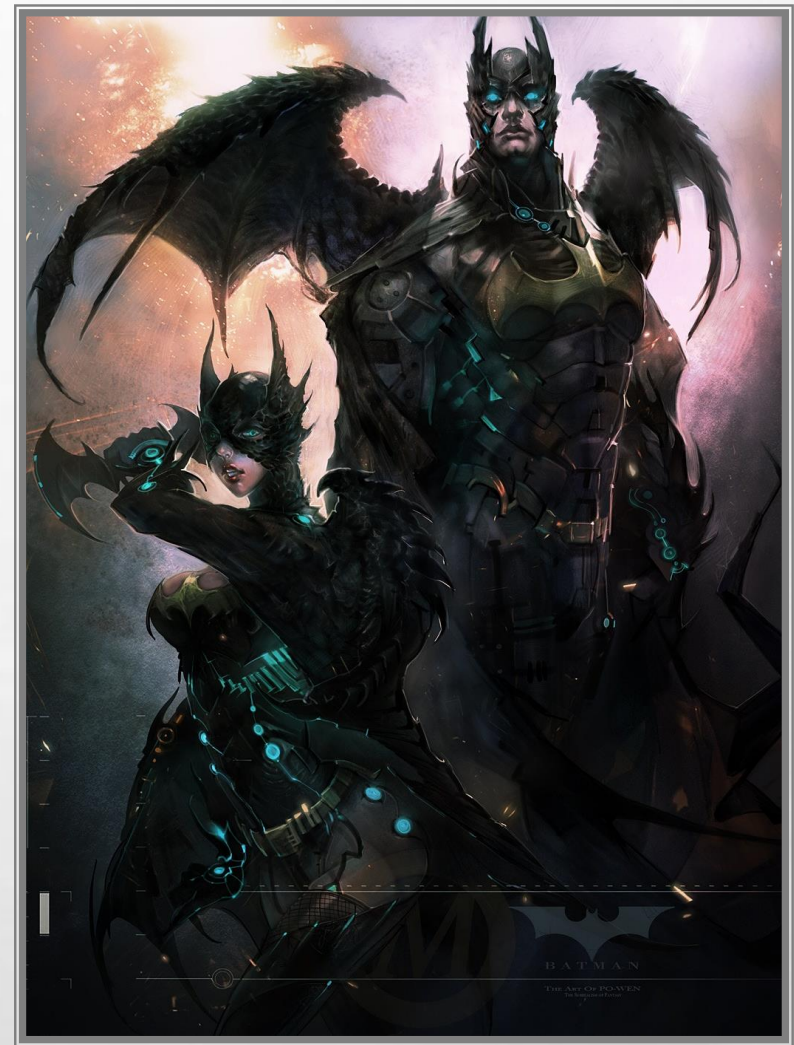




HIGH FANTASY

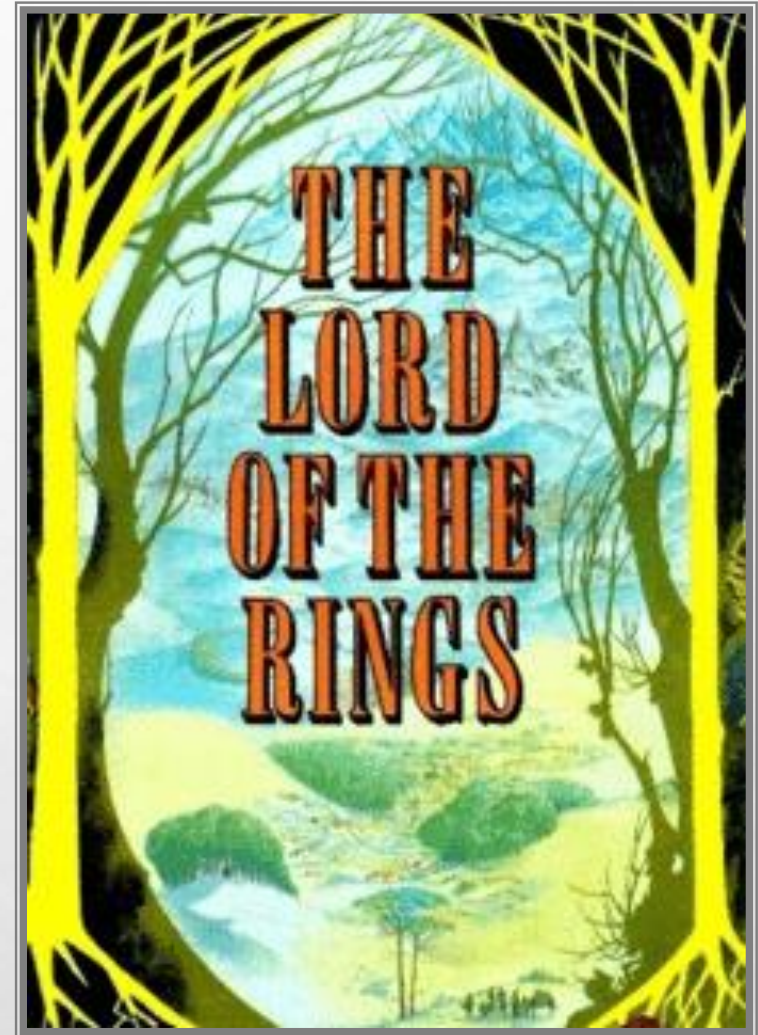
HIGH FANTASY-DEFINITION

IS A SUBGENRE OF FANTASY, DEFINED EITHER BY ITS SETTING IN AN IMAGINARY WORLD OR BY THE EPIC STATURE OF ITS CHARACTERS, THEMES, AND PLOT. THE TERM "HIGH FANTASY" WAS COINED BY LLOYD ALEXANDER IN A 1971 ESSAY, "HIGH FANTASY AND HEROIC ROMANCE".



THE LORD OF THE RINGS

**THE WORKS OF J. R. R. TOLKIEN—ESPECIALLY
THE LORD OF THE RINGS—ARE REGARDED AS
THE ARCHETYPAL WORKS OF HIGH FANTASY.**



ABSTRACT EXPRESSIONISM

ABSTRACT EXPRESSIONISM

A SCHOOL OF PAINTING THAT FLOURISHED AFTER WORLD WAR II UNTIL THE EARLY 1960S, CHARACTERIZED BY THE VIEW THAT ART IS NONREPRESENTATIONAL AND CHIEFLY IMPROVISATIONAL.

ABSTRACT ART IS DEFINED AS ART THAT HAS NO REFERENCE TO ANY FIGURATIVE REALITY. IN ITS WIDER DEFINITION THE TERM DESCRIBES ART THAT DEPICTS REAL FORMS IN A SIMPLIFIED OR RATHER REDUCED WAY - KEEPING ONLY AN ILLUSION OF THE ORIGINAL NATURAL SUBJECT. THE ABSTRACT PAINTINGS OF JOAN MIRÓ ARE A GOOD EXAMPLE OF THIS WIDER DEFINITION. THE TERM NON-FIGURATIVE IS USED AS A SYNONYM.



JACKSON POLLOCK

ON THE CANVAS WAS NOT A PICTURE, BUT AN EVENT.

**HAROLD ROSENBERG, "THE AMERICAN ACTION PAINTERS," ART NEWS
(DECEMBER 1952)**

**JACKSON POLLOCK'S MURAL-SIZE "DRIP" PAINTINGS MET WITH MIXED
REACTIONS WHEN THEY DEBUTED AT THE BETTY PARSONS GALLERY IN
NEW YORK CITY IN 1948.**

**HE LAID A LARGE CANVAS ON THE FLOOR OF HIS STUDIO BARN, NEARLY
COVERING THE SPACE. USING HOUSE PAINT, HE DRIPPED, POURED, AND
FLUNG PIGMENT FROM LOADED BRUSHES AND STICKS WHILE WALKING
AROUND IT.**





POLLOCK AT WORK;)



JACKSON POLLOCK'S PAINTING

LE CORBUSIER

LE CORBUSIER

CHARLES-ÉDOUARD JEANNERET-GRIS, WHO WAS BETTER KNOWN AS LE CORBUSIER; OCTOBER 6, 1887 – AUGUST 27, 1965), WAS A SWISS-FRENCH ARCHITECT, DESIGNER, PAINTER, URBAN PLANNER, WRITER, AND ONE OF THE PIONEERS OF WHAT IS NOW CALLED MODERN ARCHITECTURE. HE WAS BORN IN SWITZERLAND AND BECAME A FRENCH CITIZEN IN 1930. HIS CAREER SPANNED FIVE DECADES, WITH HIS BUILDINGS CONSTRUCTED THROUGHOUT EUROPE, INDIA, AND THE AMERICAS.



CHAPELLE NOTRE DAME DU HAUT, RONCHAMP

**THE CHAPEL OF NOTRE DAME DU HAUT IN RONCHAMP (FRENCH:
CHAPELLE NOTRE-DAME-DU-HAUT DE RONCHAMP), COMPLETED IN 1954,
IS ONE OF THE FINEST EXAMPLES OF THE ARCHITECTURE OF FRANCO-
SWISS ARCHITECT LE CORBUSIER AND ONE OF THE MOST IMPORTANT
EXAMPLES OF TWENTIETH-CENTURY RELIGIOUS ARCHITECTURE.**



POMPIDOU CENTRE OPENS IN PARIS

CENTRE GEORGES POMPIDOU

CENTRE GEORGES POMPIDOU COMMONLY SHORTENED TO CENTRE POMPIDOU; ALSO KNOWN AS THE POMPIDOU CENTRE IN ENGLISH IS A COMPLEX BUILDING IN THE BEAUBOURG AREA OF THE 4TH ARRONDISSEMENT OF PARIS, NEAR LES HALLES, RUE MONTORGUEIL AND THE MARAIS. IT WAS DESIGNED IN THE STYLE OF HIGH-TECH ARCHITECTURE BY THE ARCHITECTURAL TEAM OF RICHARD ROGERS AND RENZO PIANO, ALONG WITH GIANFRANCO FRANCHINI.



LAND ART, EARTHWORKS

LAND ART, EARTHWORKS (COINED BY ROBERT SMITHSON), OR EARTH ART

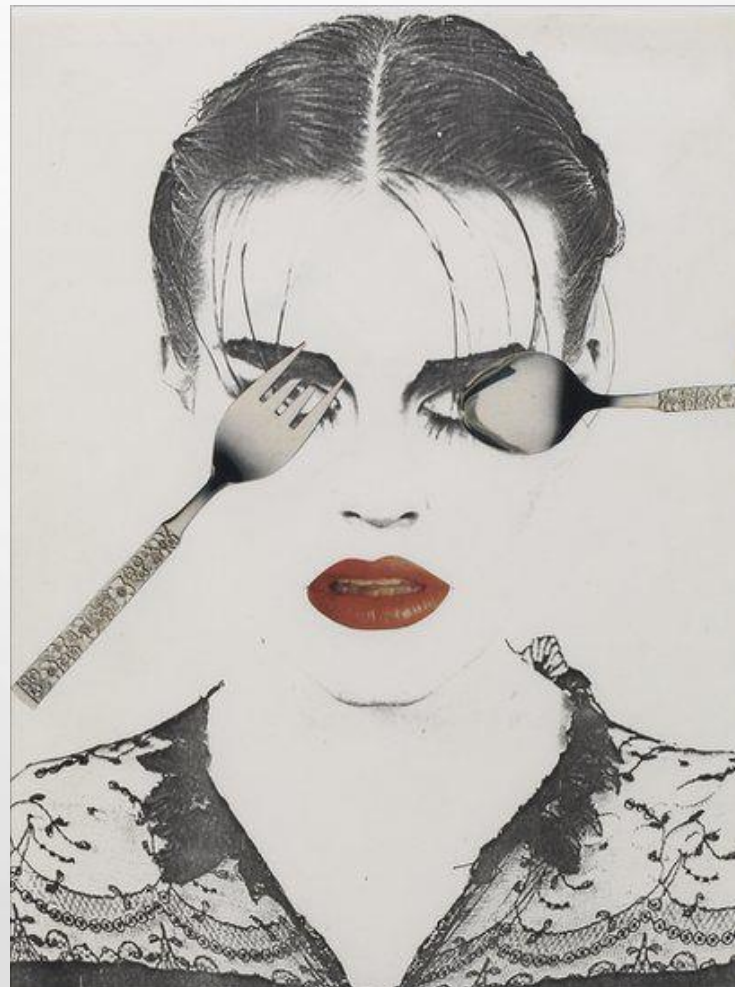
IT IS AN ART MOVEMENT IN WHICH LANDSCAPE AND THE WORK OF ART ARE INEXTRICABLY LINKED. IT IS ALSO AN ART FORM THAT IS CREATED IN NATURE, USING NATURAL MATERIALS SUCH AS SOIL, ROCK (BED ROCK, BOULDERS, STONES), ORGANIC MEDIA (LOGS, BRANCHES, LEAVES), AND WATER WITH INTRODUCED MATERIALS SUCH AS CONCRETE, METAL, ASPHALT, OR MINERAL PIGMENTS. SCULPTURES ARE NOT PLACED IN THE LANDSCAPE, RATHER, THE LANDSCAPE IS THE MEANS OF THEIR CREATION.



FEMINIST ART

FEMINIST ART

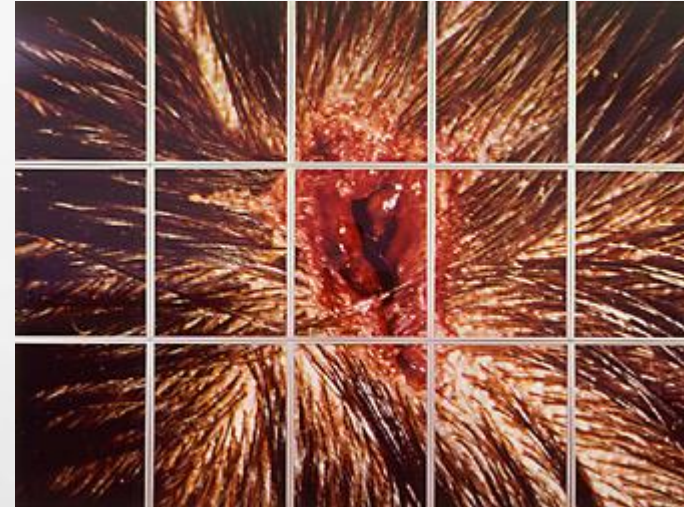
THE FEMINIST ART MOVEMENT EMERGED IN THE LATE 1960S AMIDST THE FERVOR OF ANTI-WAR DEMONSTRATIONS AS WELL AS CIVIL AND QUEER RIGHTS MOVEMENTS. HEARKENING BACK TO THE UTOPIAN IDEALS OF EARLY TWENTIETH-CENTURY MODERNIST MOVEMENTS, FEMINIST ARTISTS SOUGHT TO CHANGE THE WORLD AROUND THEM THROUGH THEIR ART, FOCUSING ON INTERVENING IN THE ESTABLISHED ART WORLD, THE ART HISTORICAL CANON, AS WELL AS EVERYDAY SOCIAL INTERACTIONS. AS ARTIST SUZANNE LACY DECLARED, THE GOAL OF FEMINIST ART WAS TO "INFLUENCE CULTURAL ATTITUDES AND TRANSFORM STEREOTYPES."



THE YOUNG BRITISH ARTISTS, OR YBAS

THE YOUNG BRITISH ARTISTS, OR YBAS

**IT IS THE NAME GIVEN TO A LOOSE GROUP OF
VISUAL ARTISTS WHO FIRST BEGAN TO
EXHIBIT TOGETHER IN LONDON, IN 1988.
MANY OF THE ARTISTS GRADUATED FROM THE
BA FINE ART COURSE AT GOLDSMITHS, IN THE
LATE 1980S.**



INSTALLATION ART

INSTALLATION ART

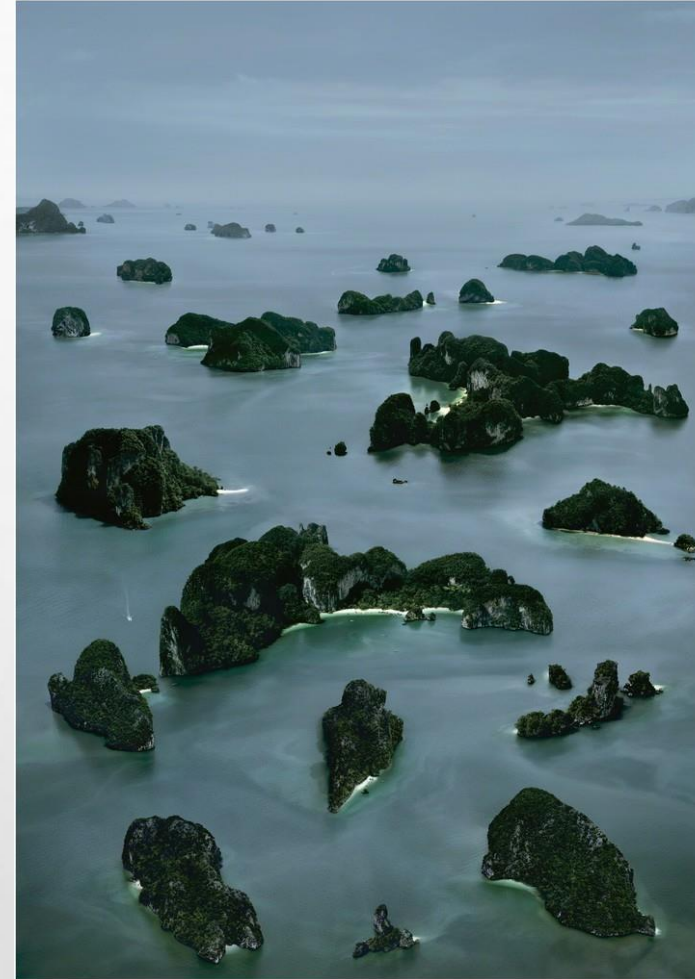
IT IS AN ARTISTIC GENRE OF THREE-DIMENSIONAL WORKS THAT OFTEN ARE SITE-SPECIFIC AND DESIGNED TO TRANSFORM THE PERCEPTION OF A SPACE. GENERALLY, THE TERM IS APPLIED TO INTERIOR SPACES, WHEREAS EXTERIOR INTERVENTIONS ARE OFTEN CALLED PUBLIC ART, LAND ART OR INTERVENTION ART; HOWEVER, THE BOUNDARIES BETWEEN THESE TERMS OVERLAP.



DUSSELDORF SCHOOL OF PHOTOGRAPHY

DUSSELDORF SCHOOL OF PHOTOGRAPHY

A GROUP OF ARTISTS, INCLUDING ANDREAS GURSKY, CANDIDA HÖFER, THOMAS STRUTH, AXEL HÜTTE, AND THOMAS RUFF, WHO STUDIED UNDER BERND AND HILLA BECHER AT THE KUNSTAKADEMIE DÜSSELDORF (DUSSELDORF ART ACADEMY) IN THE 1970S AND ROSE TO PROMINENCE IN THE 1980S. RESPONDING IN PART TO THE CONCERNS OF THE NEW TOPOGRAPHICS, THESE ARTISTS' WORKS ARE CHARACTERIZED BY A SOBER, DOCUMENTARY QUALITY, "STRAIGHT ON" (AND OFTEN EXPANSIVE) "TOPOGRAPHIC" VIEWS OF LANDSCAPES, A FOCUS ON CITYSCAPES OR INTERIOR ENVIRONMENTS, AND THE MINIMIZATION OF THE HUMAN FIGURE.



THANK YOU